

Supplementary Report -FY2019 1Q-

31st Jul 2019



A Market Information & Loading Volume by Business Segment

- A-1 : 『Dry Bulk Carriers』 『Tankers』 “Baltic Exchange Dry Index” “World Scale” 1
- A-2 : 『Car Carriers』 “Volume” by Loading/Discharging Area 2

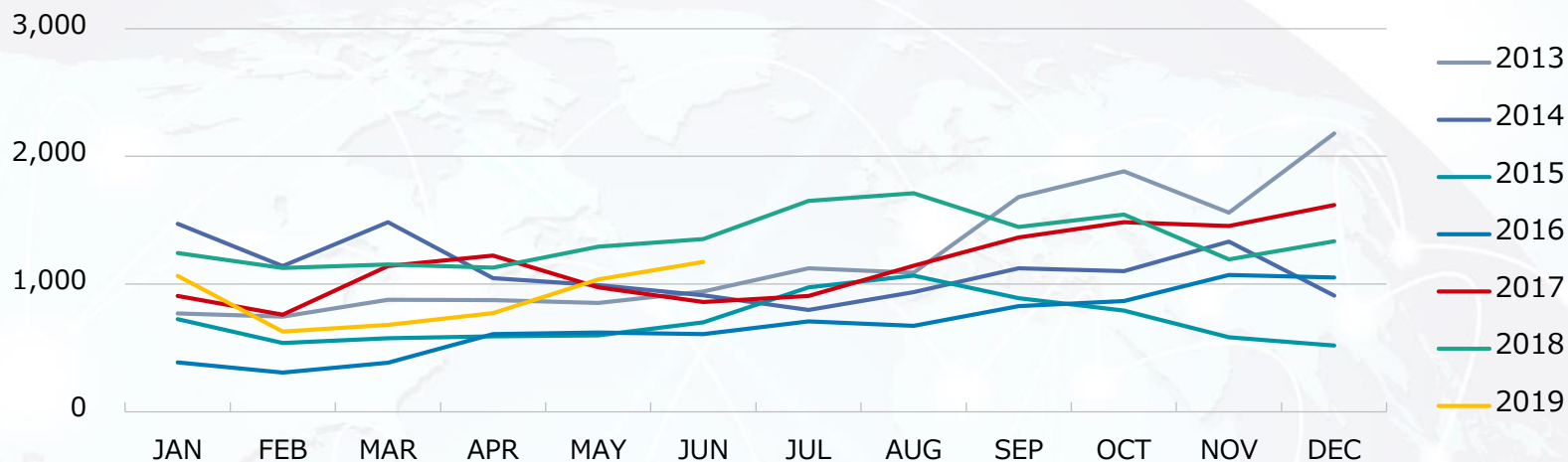
B “K” Line Group Fleet Composition

- B-1: “K” Line Group Vessels in Operation 3
- B-2: 『Dry Bulk Carriers』 『LNG Carriers/Tankers/Thermal Coal Carriers』
『Offshore Energy E&P Support』 『Car Carriers』 4
- B-3: 『Short Sea/Coastal Ships』 『Containerships』 New Buildings Delivery Schedule 5

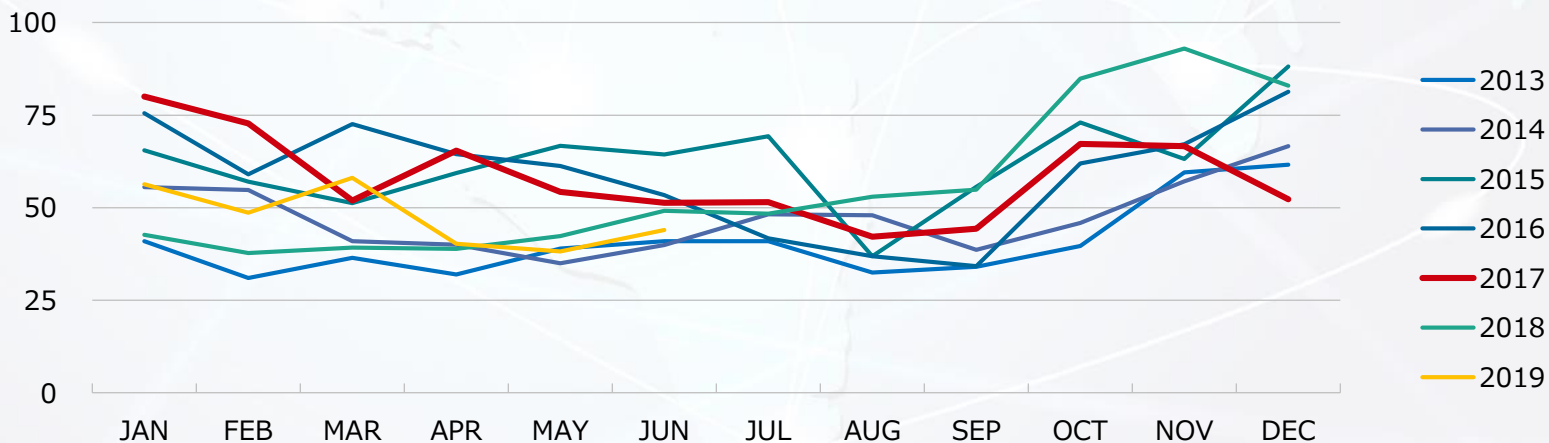
C Others

- C-1: “Non-Operating Income and Expenses” “Extraordinary Profits and Losses” 6
- C-2: Performance per Segment 7

Baltic Dry Index



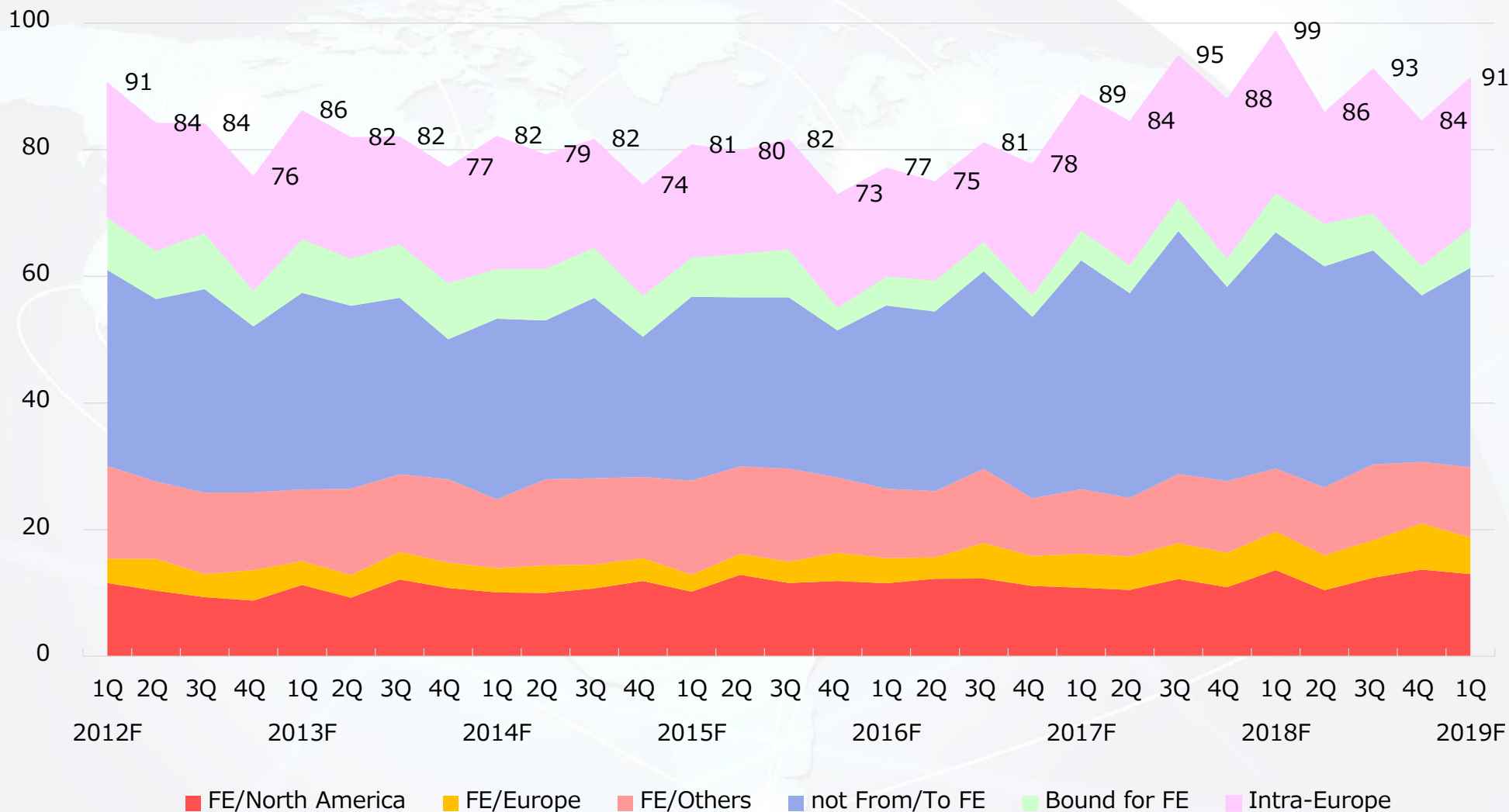
World Scale VLCC(AG/JPN)



A-2 『Car Carriers』

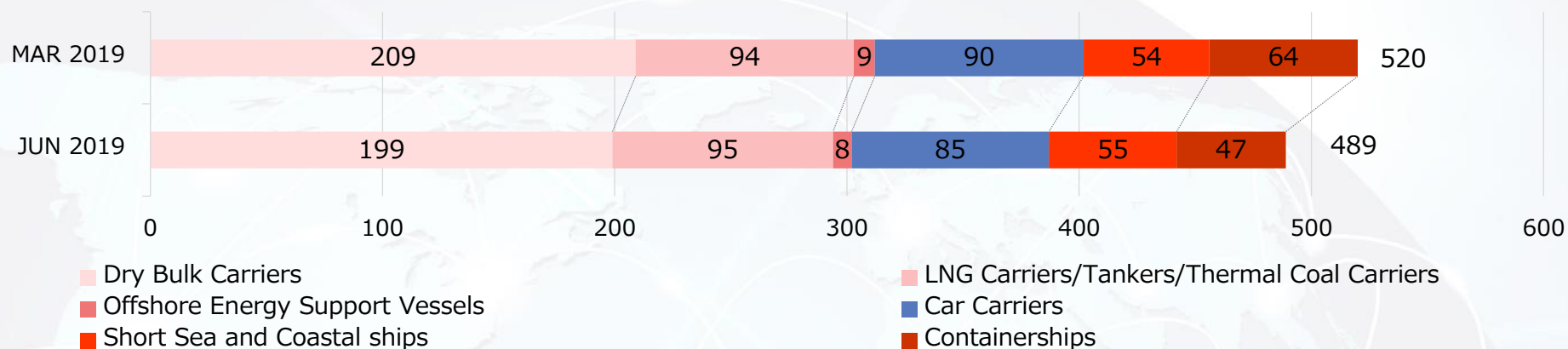
“Volume” by Loading/Discharging Area

(10,000 Units)



B-1 "K" Line Group Vessels in Operation

"K" Line Group Fleet Composition



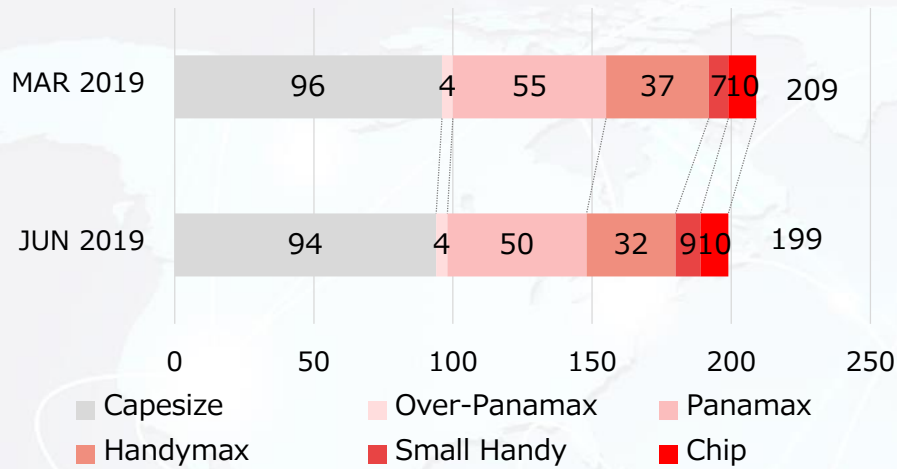
Type of Vessel	Owned		Chartered		Total		MAR 2019 Total	
	No.	DWT(MT)	No.	DWT(MT)	No.	DWT(MT)	No.	DWT(MT)
Dry Bulk	54	6,645,827	145	18,813,487	199	25,459,314	209	26,423,503
Thermal Coal Carriers	8	703,971	19	1,664,416	27	2,368,387	25	2,207,803
LNG Carriers	46	3,873,775	2	152,272	48	4,026,047	47	3,950,938
Tankers	12	1,872,937	8	1,054,712	20	2,927,649	22	3,269,333
Offshore Support Vessels	6	29,186	0	-	6	29,186	7	32,481
Drillship	1	-	0	-	1	-	1	-
FPSO	1	-	0	-	1	-	1	-
Car Carriers	32	492,599	53	911,221	85	1,403,820	90	1,479,845
Short Sea and Coastal ships	26	213,709	29	410,310	55	624,019	54	612,051
Containerships	8	559,297	39	3,544,971	47	4,104,268	64	4,943,047
Total	194	14,391,301	295	26,551,389	489	40,942,690	520	42,919,001

* The number of owned vessels includes co-owned vessels, and deadweight tonnage includes share of other companies' ownership in co-owned vessels.

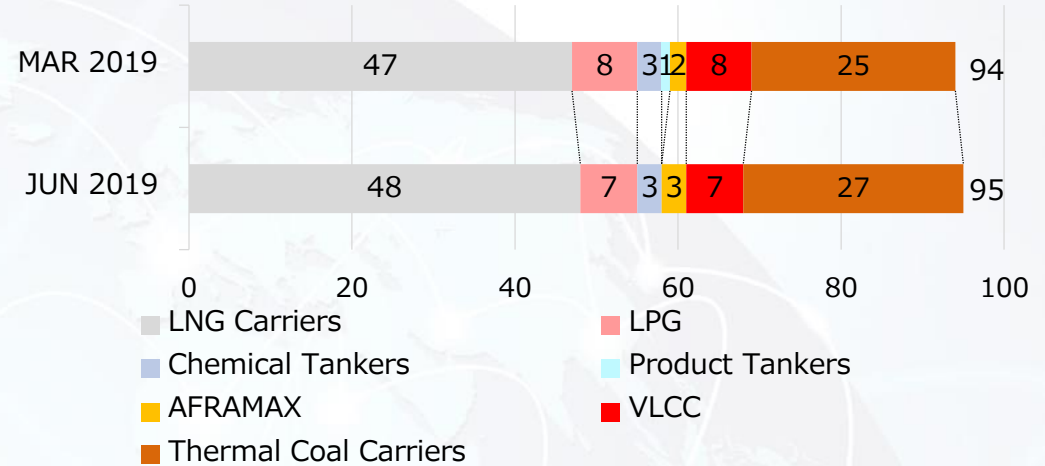
* Includes flagships and spot and/or short term activities at the end of term.

B-2 『Dry Bulk Carriers』『LNG Carriers/Tankers/Thermal Coal Carriers』 『Offshore Energy E&P Support』『Car Carriers』

Dry Bulk Carriers

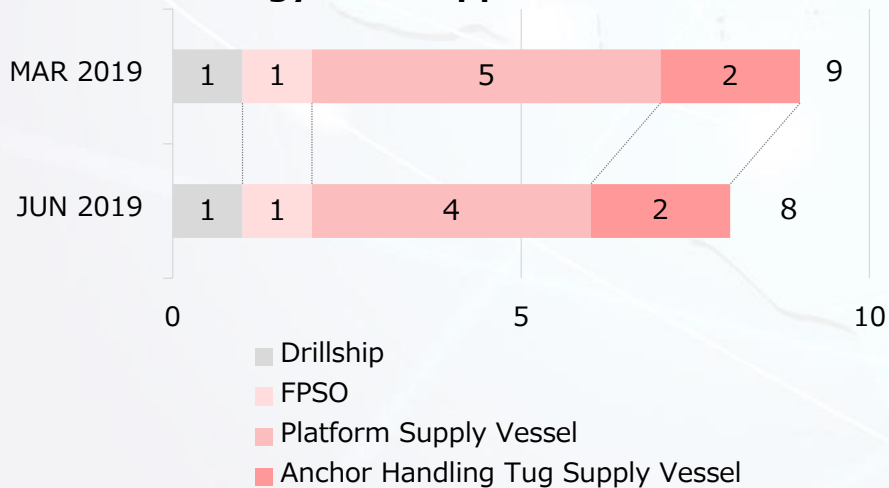


LNG Carriers/Tankers/Thermal Coal Carriers

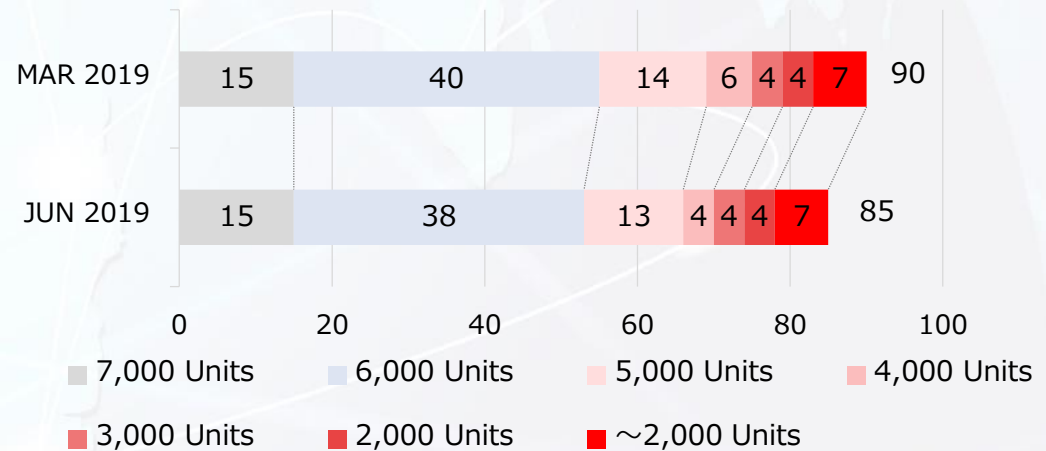


※The number of LNG Carriers includes 29 carriers owned by SPC of the projects.

Offshore Energy E&P Support

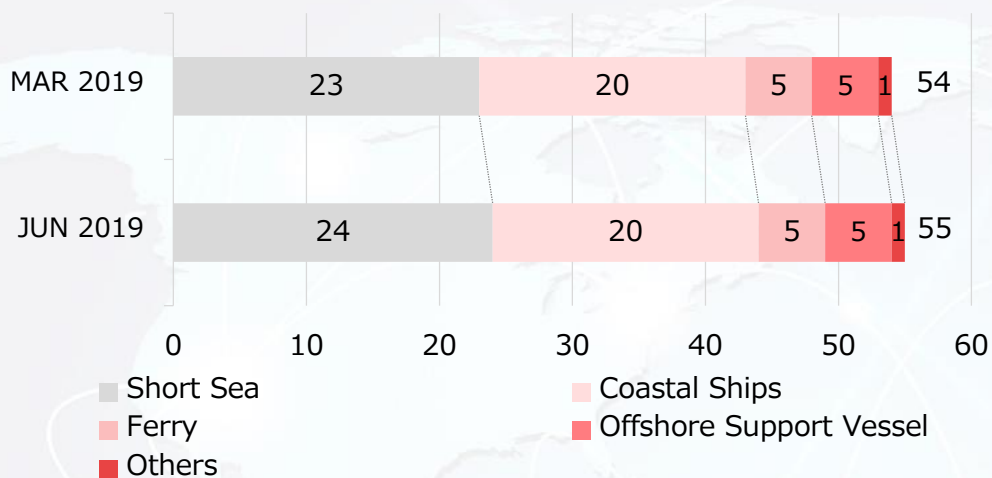


Car Carriers

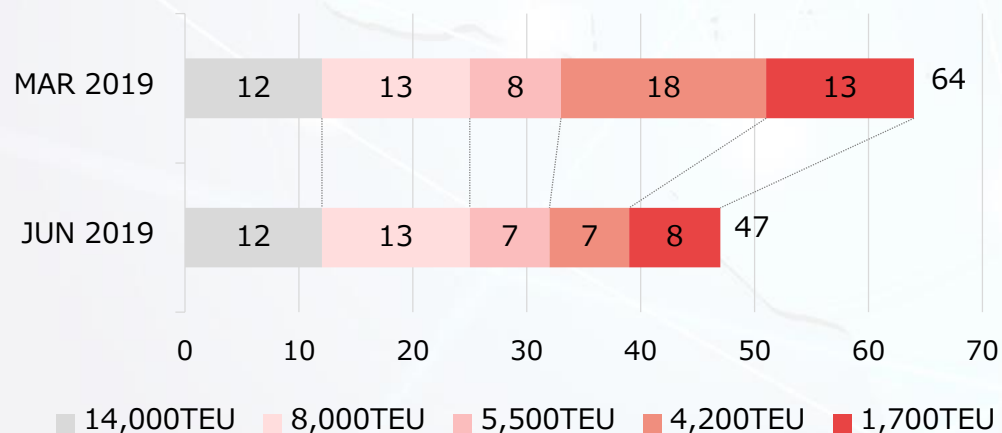


B-3 『Short Sea and Coastal Ships』 『Containerships』 New Building Delivery Schedule

Short Sea and Coastal Ships



Containerships



New Building Delivery Schedule

	FY2019	FY2020	FY2021
Dry Bulk Carriers	3	3	2
Capesize	3	2	1
Panamax		1	1
Handymax			
Small Handy			
Chip			
LNG Carriers	0	0	0
Tankers	2	0	0
VLCC			
AFRAMAX	2		
LPG			
Thermal Coal Carriers	5	0	0
Offshore Energy E&P Support Vessels	0	0	0
Offshore			
Drillship			
FPSO			
LNG Bunkering Vessels	0	1	0
Car Carriers	0	1	0
7500 Units		1	
Short Sea and Coastal ships	0	2	0
Total	10	7	2

C-1 “Non-Operating Income and Expenses” “Extraordinary Profits and Losses”

Non-Operating Income and Expenses

(billion yen)

	1Q
Financial Gain/Loss	- 1.6
Equity in Gain/Loss of subsidiaries and affiliates	1.4
Exchange Gain/Loss	- 1.4
Others	0.2
Consolidated Total	- 1.3

Extraordinary Profits and Losses

	1Q
Gain/Loss on Sales of Fixed Assets	2.1
Gain/Loss on Liquidation of Subsidiaries	2.9
Others	0.9
Consolidated Total	5.9

C-2 Performance per Business Segment

Operating Revenue

(million yen)

	FY2014	FY2015	FY2016	FY2017
Containership	684,781	622,962	524,082	603,787
Bulk Shipping	603,724	570,151	458,984	523,940
Offshore Energy E&P Support & Heavy Lifter	35,319	24,656	19,420	7,472
Others	86,414	87,225	79,970	82,071
Total	1,410,239	1,304,996	1,082,457	1,217,270
Adjustment	△ 57,818	△ 61,063	△ 52,266	△ 55,245
Consolidated	1,352,421	1,243,932	1,030,191	1,162,025

Ordinary Income

	FY2014	FY2015	FY2016	FY2017
Containership	20,623	△ 10,049	△ 31,488	3,366
Bulk Shipping	36,501	24,656	△ 9,476	3,202
Offshore Energy E&P Support & Heavy Lifter	△ 5,670	△ 6,553	△ 5,119	△ 965
Others	3,024	1,826	2,518	3,341
Total	54,477	9,879	△ 43,566	8,945
Adjustment	△ 5,497	△ 6,541	△ 8,822	△ 6,982
Consolidated	48,981	3,338	△ 52,388	1,962

※ New Segment Basis

Operating Revenue

(million yen)

	FY2017	FY2018
Dry Bulk	249,043	273,986
Energy Resource Transport	75,415	88,701
Product Logistics	806,689	449,929
Others	87,018	82,129
Total	1,218,166	894,747
Adjustment	△ 56,141	△ 58,015
Consolidated	1,162,025	836,731

Ordinary Income

	FY2017	FY2018
Dry Bulk	△ 132	4,441
Energy Resource Transport	440	2,491
Product Logistics	5,777	△ 49,196
Others	3,017	1,124
Total	9,102	△ 41,139
Adjustment	△ 7,140	△ 7,794
Consolidated	1,962	△ 48,933

※From FY2018, We renewed our Business Segment for disclosure as below due to the Integration of Container Shipping Businesses as "Ocean Network Express".

(Old) 「Containerships」 「Bulk Shipping」 「Offshore Energy E&P Support & Heavy Lifter」 and 「Others」

→(New) 「Dry Bulk」 「Energy Resource Transport」 「Product Logistics」 and 「Others」

"K"LINE Group seek development of customer-oriented new business model and rebuild our business portfolio.