

Supplementary Report -FY2019 2Q-

31st Oct 2019



A Market Information & Loading Volume by Business Segment

- A-1 : 『Dry Bulk Carriers』 『Tankers』 “Baltic Exchange Dry Index” “World Scale” 1
- A-2 : 『Car Carriers』 “Volume” by Loading/Discharging Area 2

B “K” Line Group Fleet Composition

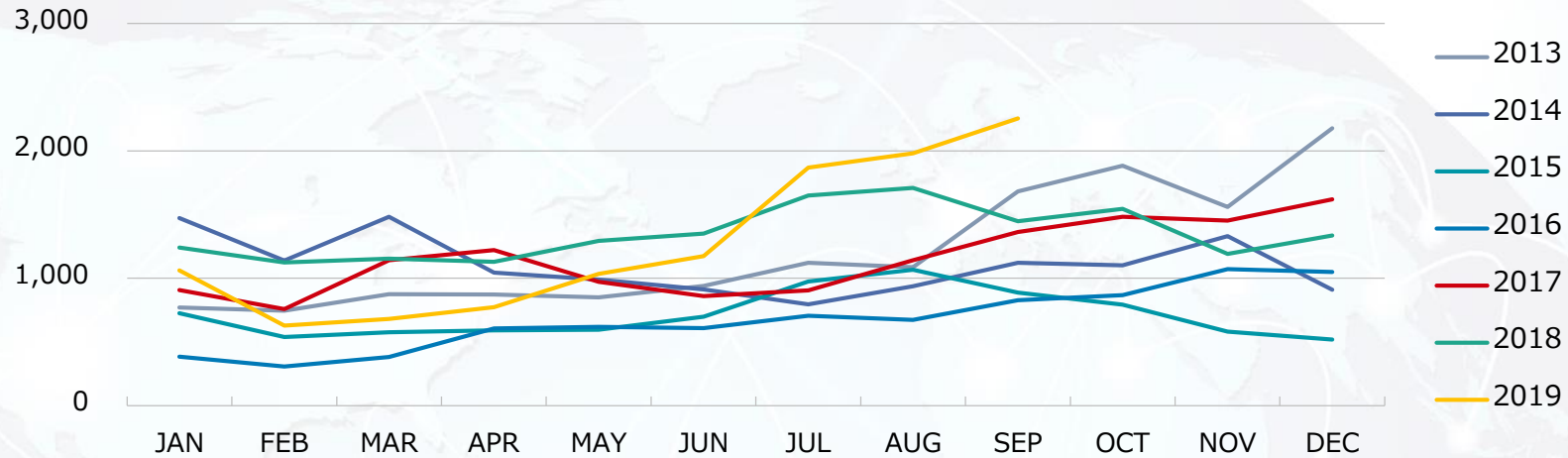
- B-1: “K” Line Group Vessels in Operation 3
- B-2: 『Dry Bulk Carriers』 『LNG Carriers/Tankers/Thermal Coal Carriers』
『Offshore Energy E&P Support』 『Car Carriers』 4
- B-3: 『Short Sea/Coastal Ships』 『Containerships』 New Buildings Delivery Schedule 5

C Others

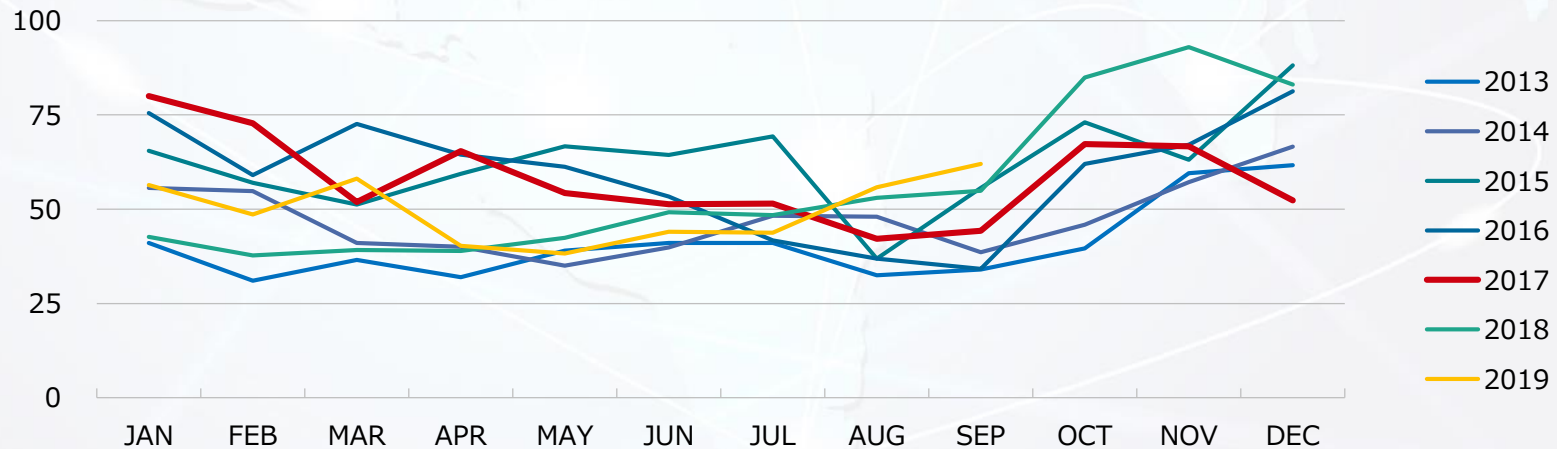
- C-1: “Non-Operating Income and Expenses” “Extraordinary Profits and Losses” 6
- C-2: Performance per Segment 7

“Baltic Exchange Dry Index” “World Scale”

Baltic Dry Index



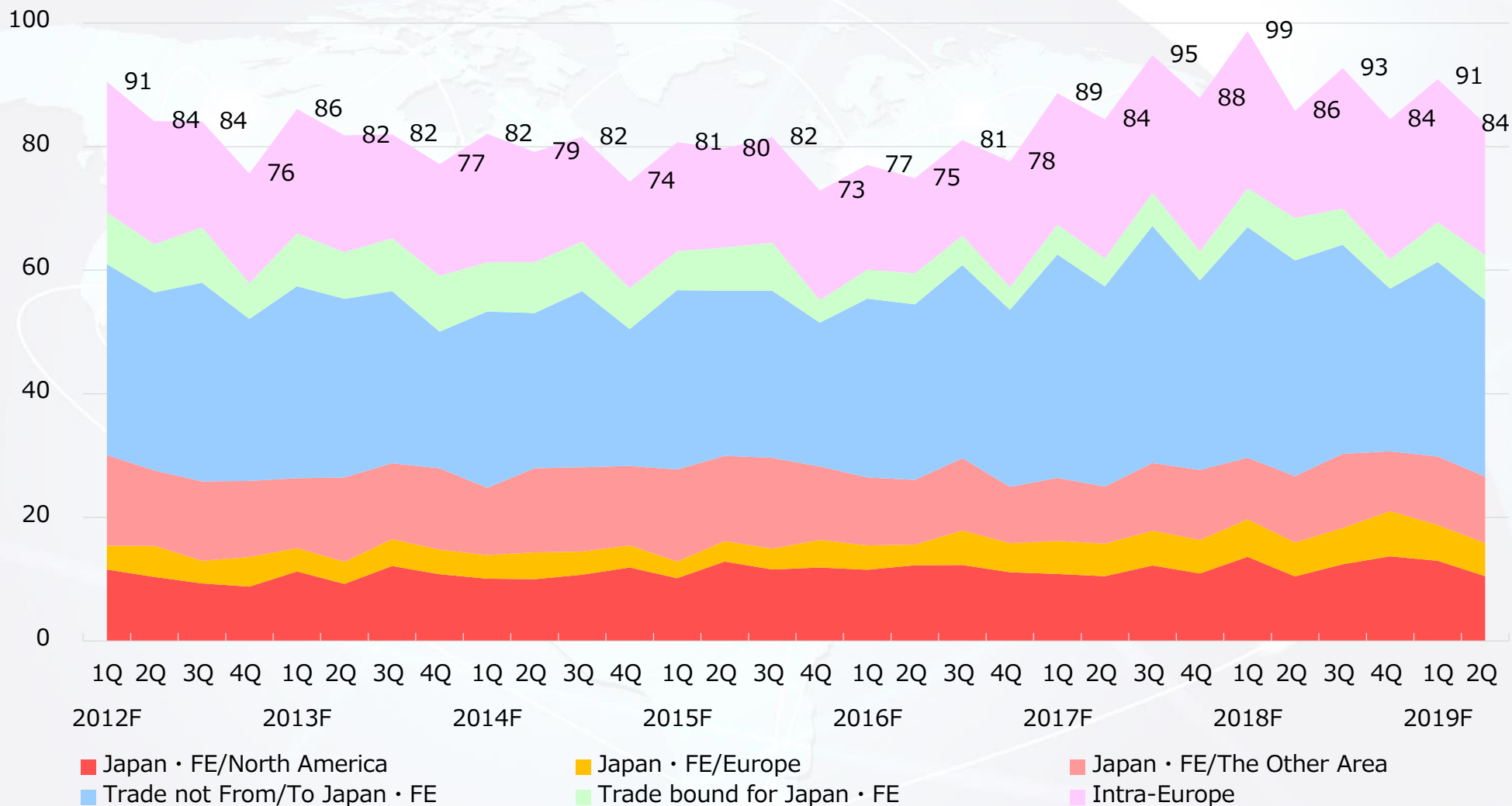
World Scale VLCC(AG/JPN)



A-2 『Car Carriers』

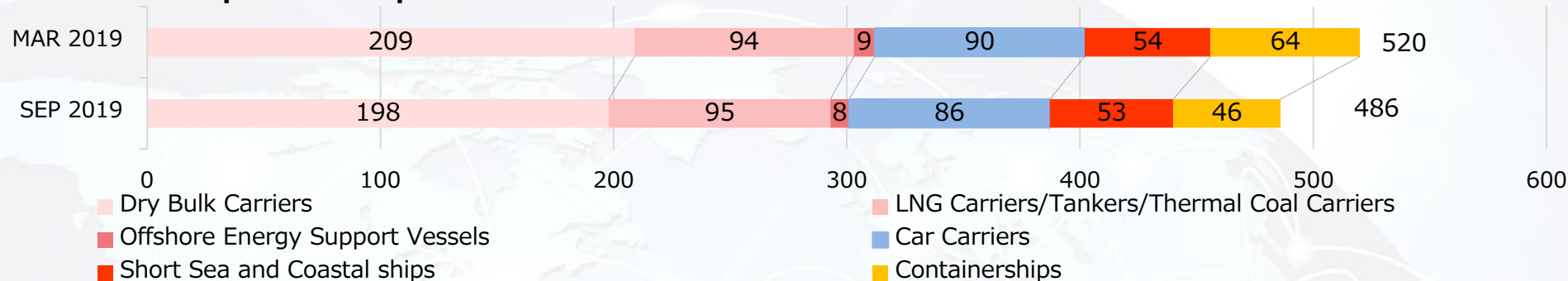
“Volume” by Loading/Discharging Area

(10,000 Units)



B-1 "K" Line Group Vessels in Operation

"K" Line Group Fleet Composition



"K"LINE Group Vessels in Operation

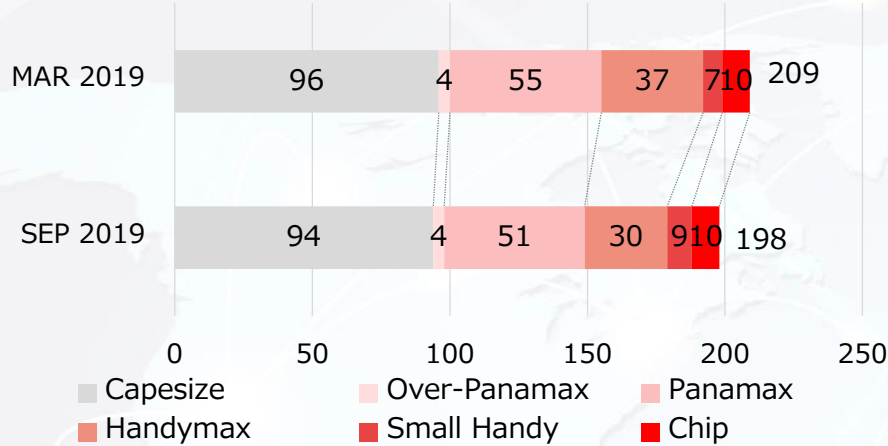
Type of Vessel	Owned		Chartered		Total		MAR 2019	
	No.	DWT(MT)	No.	DWT(MT)	No.	DWT(MT)	No.	DWT(MT)
Dry Bulk	54	6,645,827	144	18,834,507	198	25,480,334	209	26,423,503
Thermal Coal Carriers	8	703,971	21	1,880,996	29	2,584,967	25	2,207,803
LNG Carriers	46	3,873,775	2	152,272	48	4,026,047	47	3,950,938
Tankers	12	1,956,607	6	891,525	18	2,848,132	22	3,269,333
Offshore Support Veesels	6	29,186	0	-	6	29,186	7	32,481
Drillship	1	-	0	-	1	-	1	-
FPSO	1	-	0	-	1	-	1	-
Car Carriers	32	491,039	54	922,680	86	1,413,719	90	1,479,845
Short Sea and Coastal ships	25	208,374	28	398,602	53	606,976	54	612,051
Containerships	7	460,448	39	3,621,895	46	4,082,343	64	4,943,047
Total	192	14,369,227	294	26,702,477	486	41,071,704	520	42,919,001

* The number of owned vessels includes co-owned vessels, and deadweight tonnage includes share of other companies' ownership in co-owned vessels.

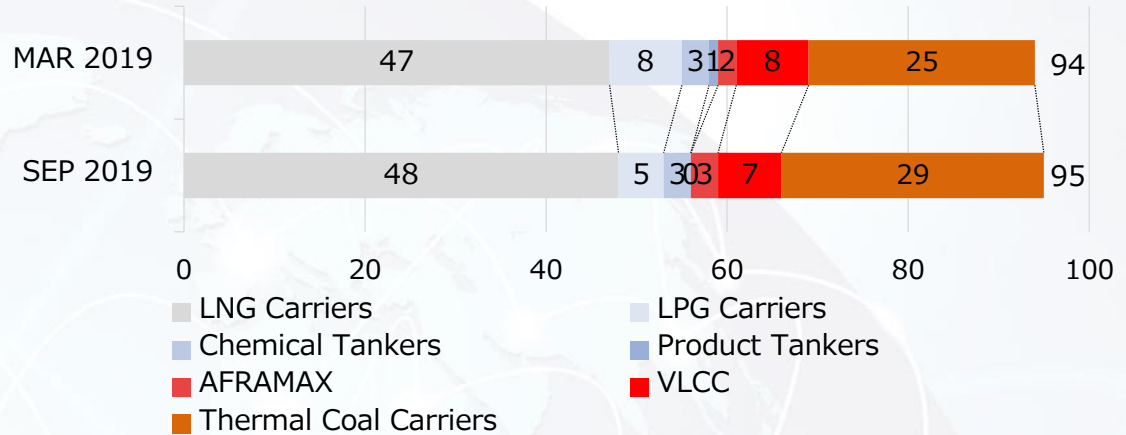
* Includes flagships and spot and/or short term activities at the end of term.

B-2 『Dry Bulk Carriers』『LNG Carriers/Tankers/Thermal Coal Carriers』 『Offshore Energy E&P Support』『Car Carriers』

Dry Bulk Carriers

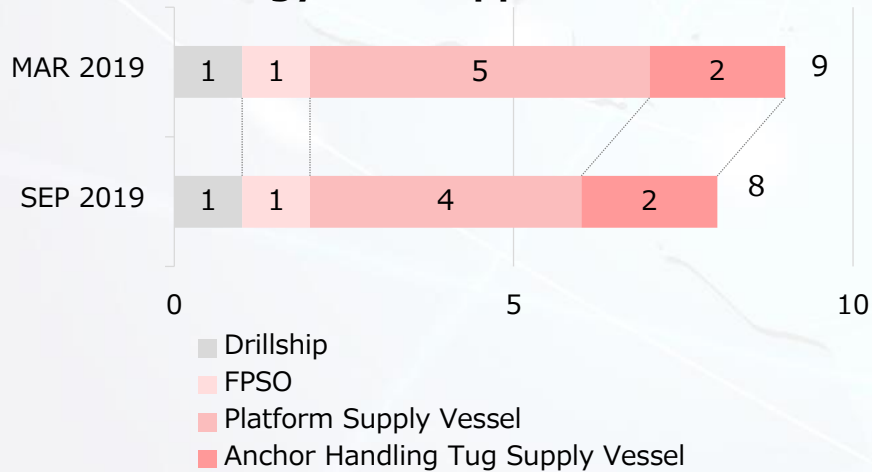


LNG Carriers/Tankers/Thermal Coal Carriers

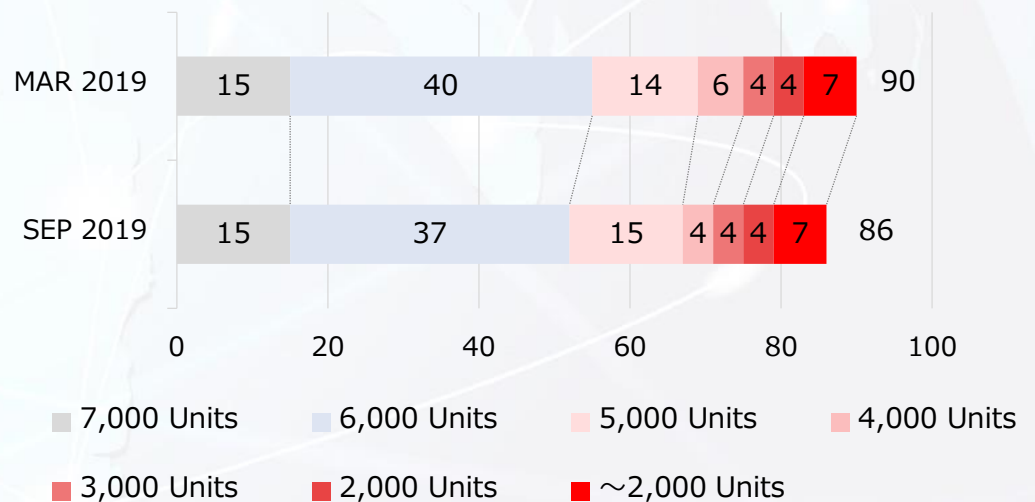


※The number of LNG Carriers includes 29 vessels owned by SPC of the projects.

Offshore Energy E&P Support

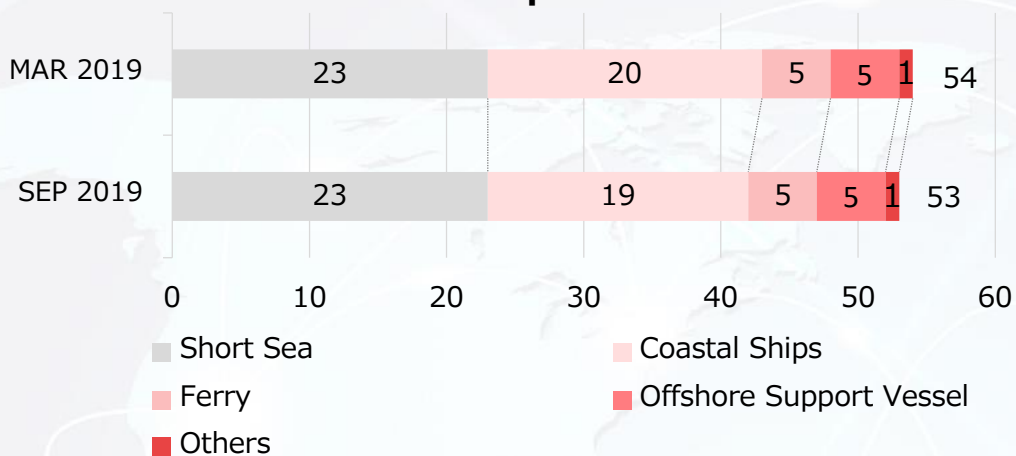


Car Carriers

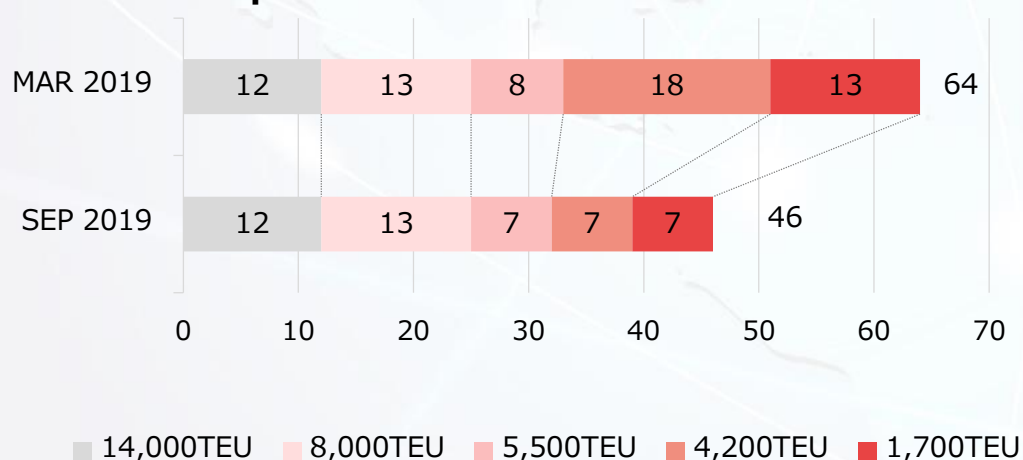


B-3 『Short Sea and Coastal Ships』 『Containerships』 New Building Delivery Schedule

Short Sea and Coastal Ships



Containerships



New Building Delivery Schedule

	FY2019	FY2020	FY2021
Dry Bulk Carriers	3	3	2
Capesize	3	2	1
Panamax		1	1
Handymax			
Small Handy			
Chip			
LNG Carriers	0	0	0
Tankers	2	0	0
VLCC			
AFRAMAX	2		
LPG			
Thermal Coal Carriers	5	0	0
Offshore Energy E&P Support Vessels	0	0	0
Offshore			
Drillship			
FPSO			
LNG Bunkering Vessels	0	1	0
Car Carriers	0	1	0
7500 Units		1	
Short Sea and Coastal ships	0	2	0
Total	10	7	2

C-1 “Non-Operating Income and Expenses” “Extraordinary Profits and Losses”

Non-Operating Income and Expenses

	(billion yen)		
	1Q	2Q	1H
Financial Gain/Loss	-1.6	-1.6	-3.1
Equity in Gain/Loss of subsidiaries and affiliates	1.4	5.2	6.6
Exchange Gain/Loss	-1.4	-0.4	-1.8
Others	0.2	0.4	0.6
Consolidated Total	-1.3	3.6	2.3

Extraordinary Profits and Losses

	1Q	2Q	1H
Gain/Loss on Sales of Fixed Assets	2.1	0.5	2.6
Gain/Loss on Liquidation of Subsidiaries	2.9	-0.2	2.7
Impairment Loss	-	-0.3	-0.3
Others	0.9	0.1	0.9
Consolidated Total	5.9	0.1	5.9

C-2 Performance per Business Segment

Operating Revenue

(million yen)

	FY2014	FY2015	FY2016	FY2017
Containership	684,781	622,962	524,082	603,787
Bulk Shipping	603,724	570,151	458,984	523,940
Offshore Energy E&P Support & Heavy Lifter	35,319	24,656	19,420	7,472
Others	86,414	87,225	79,970	82,071
Total	1,410,239	1,304,996	1,082,457	1,217,270
Adjustment	△ 57,818	△ 61,063	△ 52,266	△ 55,245
Consolidated	1,352,421	1,243,932	1,030,191	1,162,025

Ordinary Income

	FY2014	FY2015	FY2016	FY2017
Containership	20,623	△ 10,049	△ 31,488	3,366
Bulk Shipping	36,501	24,656	△ 9,476	3,202
Offshore Energy E&P Support & Heavy Lifter	△ 5,670	△ 6,553	△ 5,119	△ 965
Others	3,024	1,826	2,518	3,341
Total	54,477	9,879	△ 43,566	8,945
Adjustment	△ 5,497	△ 6,541	△ 8,822	△ 6,982
Consolidated	48,981	3,338	△ 52,388	1,962

※ Current Segment Basis

Operating Revenue

(million yen)

	FY2017	FY2018
Dry Bulk	249,043	273,986
Energy Resource Transport	75,415	88,701
Product Logistics	806,689	449,929
Others	87,018	82,129
Total	1,218,166	894,747
Adjustment	△ 56,141	△ 58,015
Consolidated	1,162,025	836,731

Ordinary Income

	FY2017	FY2018
Dry Bulk	△ 132	4,441
Energy Resource Transport	440	2,491
Product Logistics	5,777	△ 49,196
Others	3,017	1,124
Total	9,102	△ 41,139
Adjustment	△ 7,140	△ 7,794
Consolidated	1,962	△ 48,933

※From FY2018, We renewed our Business Segment for disclosure as below due to the Integration of Container Shipping Businesses as "Ocean Network Express".

(Old) 「Containerships」 「Bulk Shipping」 「Offshore Energy E&P Support & Heavy Lifter」 and 「Others」

→(Current) 「Dry Bulk」 「Energy Resource Transport」 「Product Logistics」 and 「Others」

"K"LINE Group seek development of customer-oriented new business model and rebuild our business portfolio.