

Supplementary Report -FY2018 3Q-

31st Jan 2019



A Market Information & Loading Volume by Business Segment

- A-1 : 『Dry Bulk Carriers』 『Tankers』 “Baltic Dry Index” “World Scale” 1
- A-2 : 『Car Carriers』 “Volume” by Loading/Discharging Area 2

B “K”Line Group Fleet Composition

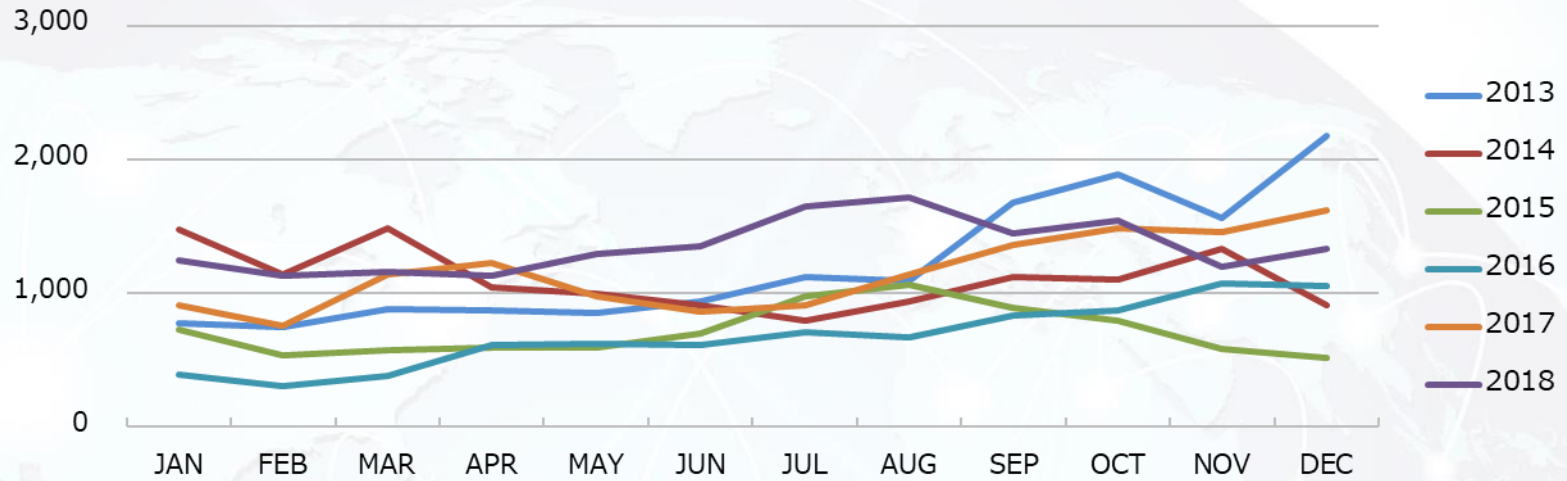
- B-1: “K”Line Group Vessels in Operation 3
- B-2: 『Dry Bulk Carriers』 『LNG Carriers/Oil Tankers/Thermal Coal Carriers』 4
『Offshore Energy E&P Support』 『Car Carriers』
- B-3: 『Short Sea/Coastal Ships』 『Containerships』 New Buildings Delivery Schedule 5

C Others

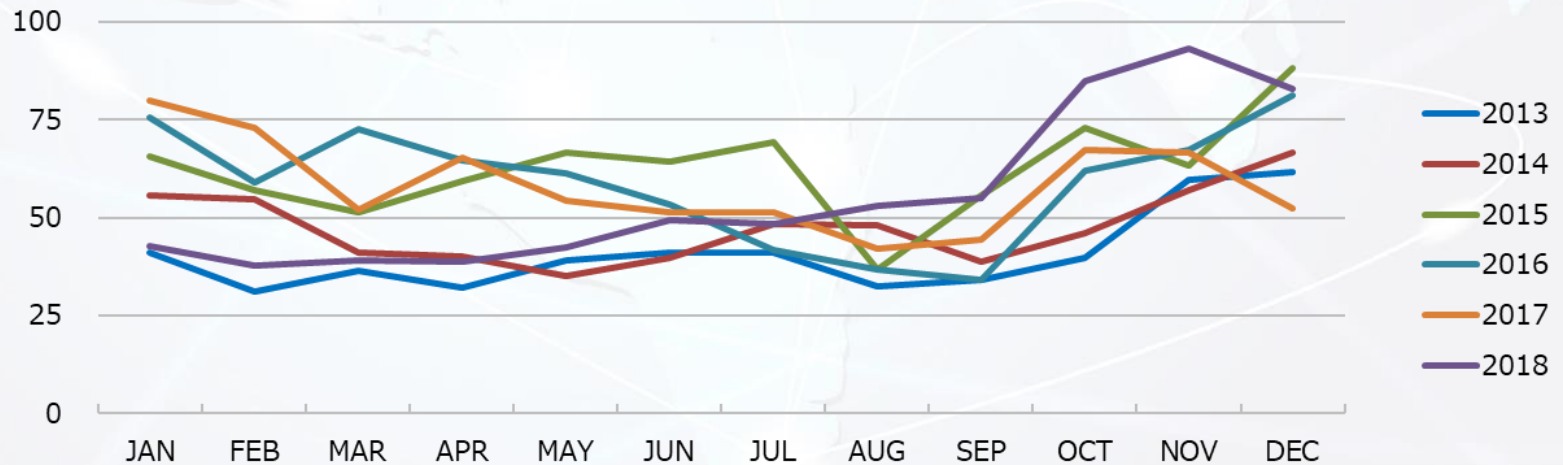
- C-1: “Non-Operating Income and Expenses” “Extraordinary Profits and Losses” 6
- C-2: Performance per Segment 7

A-1 『Dry Bulk Carriers』 『Tankers』 “Baltic Dry Index” “World Scale”

Baltic Dry Index

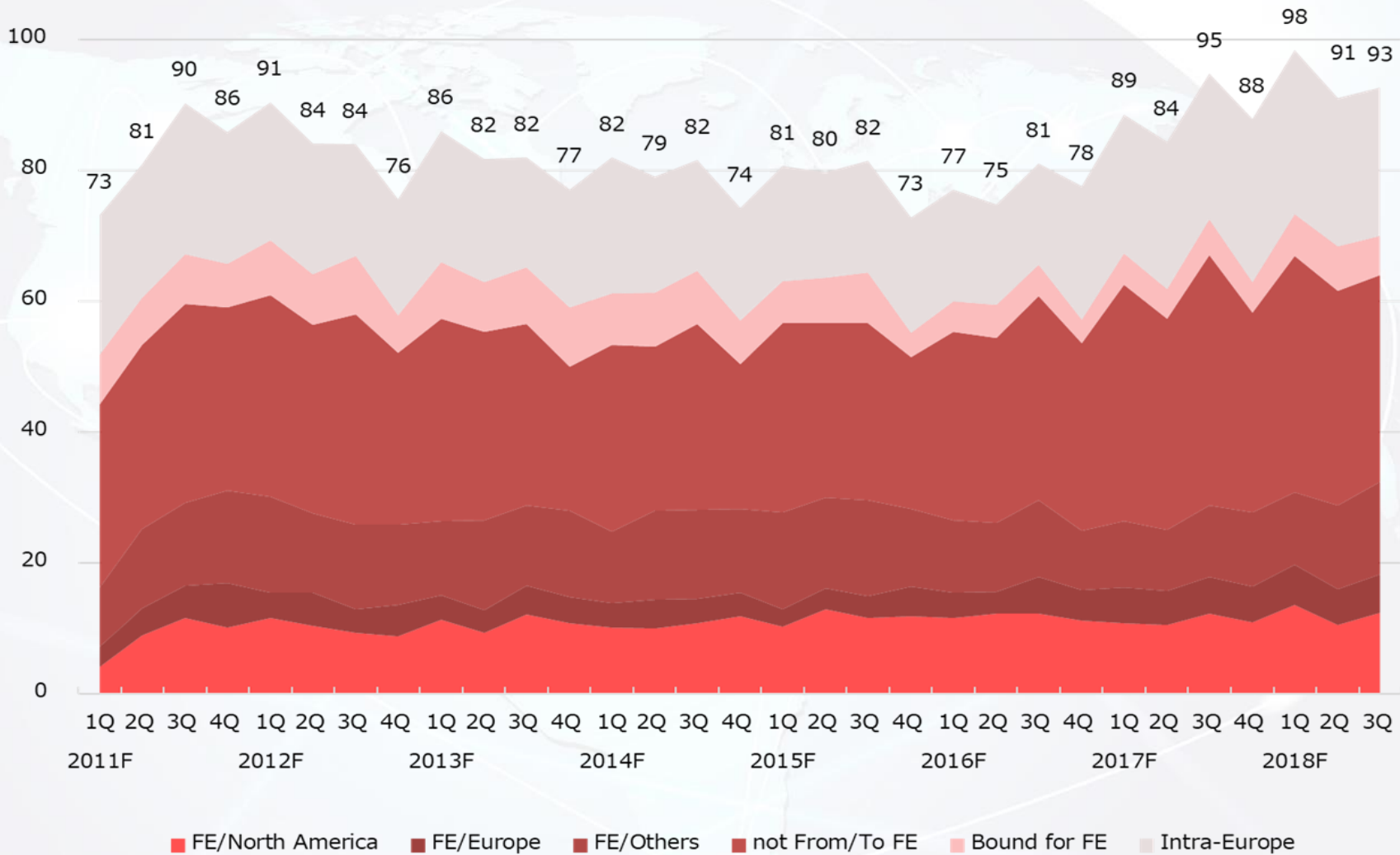


World Scale VLCC(AG/JPN)



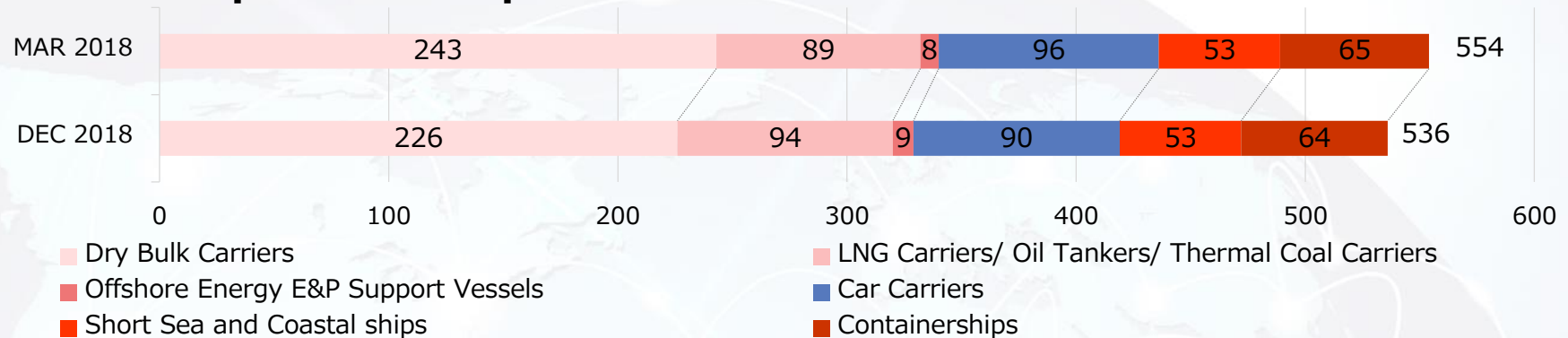
A-2 『Car Carriers』 “Volume” by Loading/Discharging Area

(10,000 Units)



B-1 "K"Line Group Vessels in Operation

"K"Line Group Fleet Composition



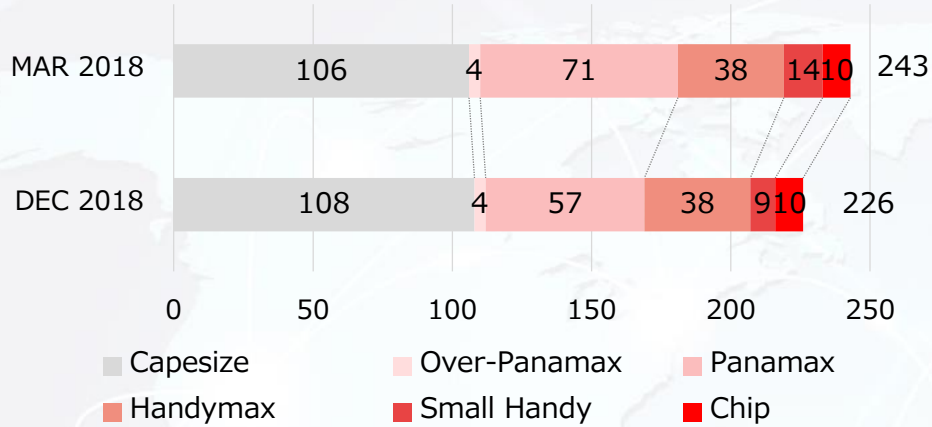
Type of Vessel	DEC 2018						MAR 2018	
	Owned		Chartered		Total		Total	
	No.	DWT(MT)	No.	DWT(MT)	No.	DWT(MT)	No.	DWT(MT)
Dry Bulk Carriers	54	6,645,827	172	22,228,155	226	28,873,982	243	29,888,753
Thermal Coal Carriers	8	703,971	15	1,336,452	23	2,040,423	23	2,036,893
LNG Carriers	45	3,793,892	2	157,046	47	3,950,938	44	3,703,272
Oil Tankers	10	1,553,660	14	1,946,300	24	3,499,960	22	2,919,246
Offshore Support Vessels	7	32,481	0	-	7	32,481	7	32,481
Drillship	1	-	0	-	1	-	1	-
FPSO	1	-	0	-	1	-	0	-
Car Carriers	32	492,599	58	981,034	90	1,473,633	96	1,556,300
Short Sea and Coastal ships	26	210,527	27	378,002	53	588,529	53	584,631
Containerships	7	460,448	57	4,482,599	64	4,943,047	65	4,395,442
Total	191	13,893,405	345	31,509,588	536	45,402,993	554	45,117,018

* The number of owned vessels includes co-owned vessels, and deadweight tonnage includes share of other companies' ownership in co-owned vessels.

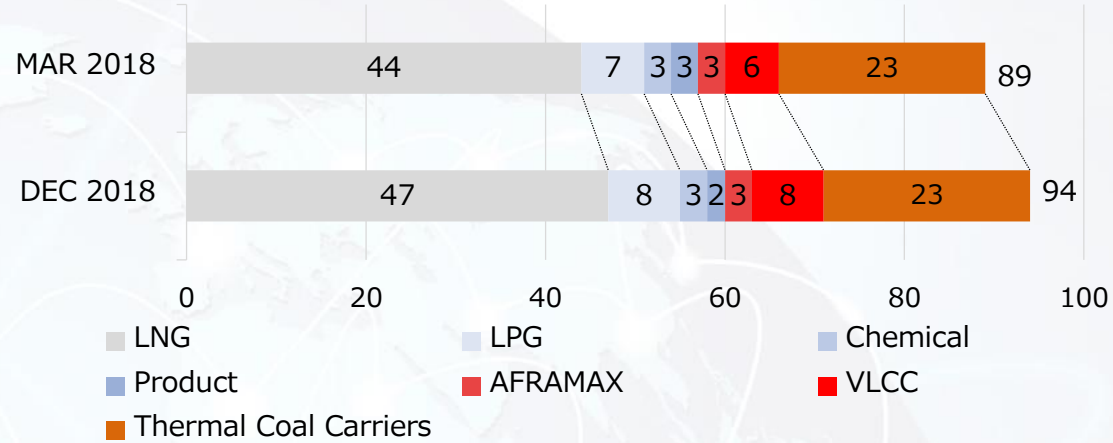
* Includes flagships and spot and/or short term activities at the end of term.

B-2 『Dry Bulk Carriers』『LNG Carriers/Oil Tankers/Thermal Coal Carriers』 『Offshore Energy E&P Support』『Car Carriers』

Dry Bulk Carriers

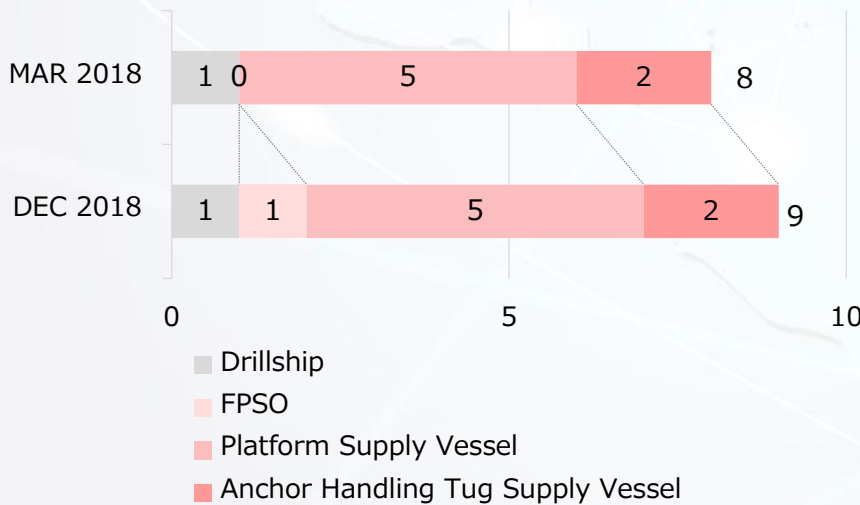


LNG Carriers/Oil Tankers/Thermal Coal Carriers

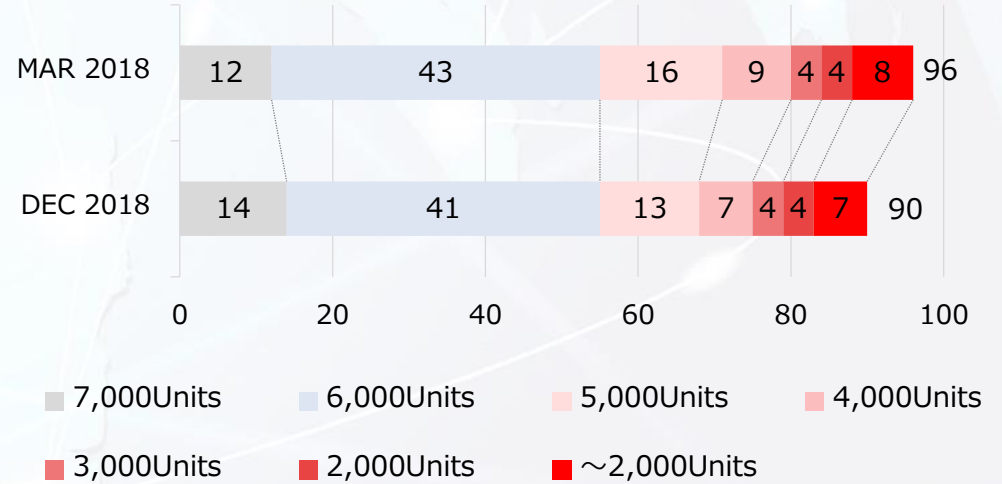


※The number of LNG Carriers includes 28 carriers owned by SPC of the projects.

Offshore Energy E&P Support

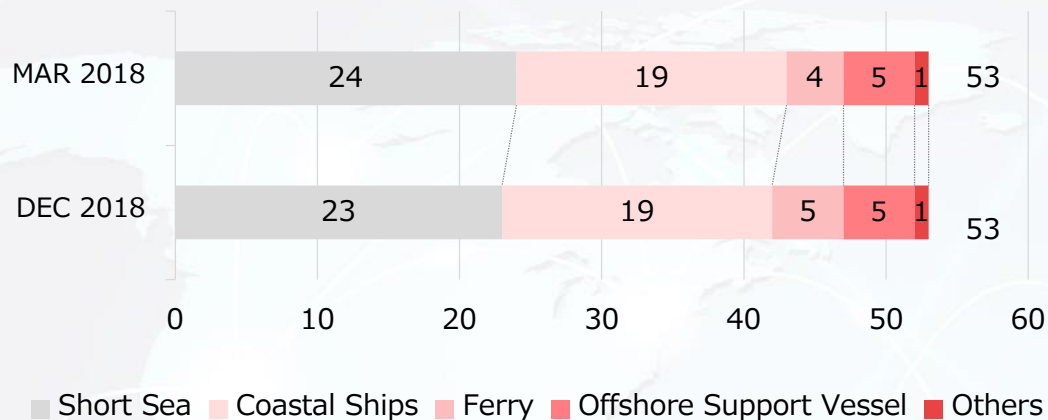


Car Carriers

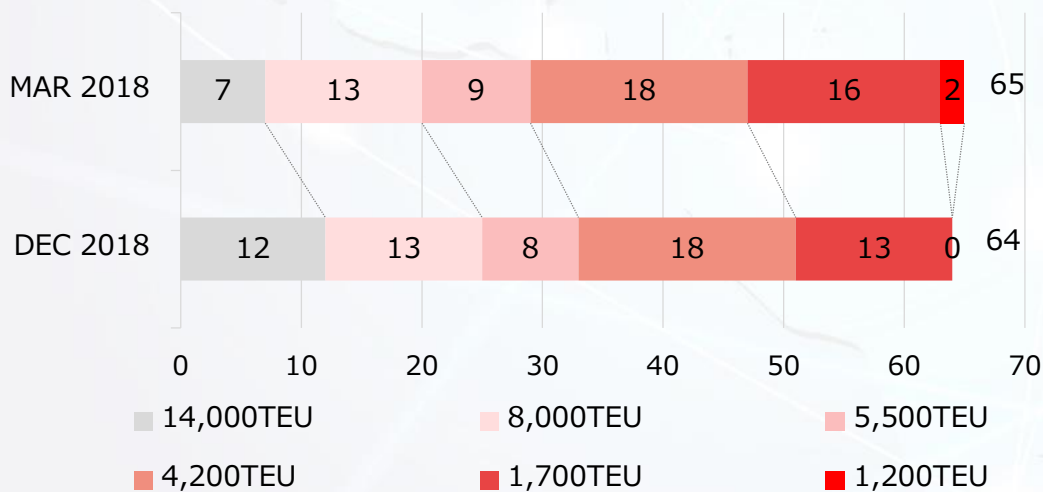


B-3 『Short Sea/Coastal Ships』 『Containerships』 New Building Delivery Schedule

Short Sea and Coastal Ships



Containerships



New Building Delivery Schedule

	FY2018	FY2019	FY2020
Dry Bulk Carriers	4	3	3
Capesize	4	3	2
Panamax			1
Handymax			
Small Handy			
Chip			
LNG Carriers	3	0	0
Oil Tankers	3	2	0
VLCC	2		
AFRAMAX		2	
LPG	1		
Thermal Coal Carriers	3	5	0
Offshore Energy E&P Support Vessels	1	0	0
Offshore			
Drillship			
FPSO	1		
LNG Bunkering Vessels	0	0	1
Car Carriers	3	0	0
7500Units	3		
Short Sea and Coastal Ships	2	0	0
Containerships	0	0	0
14,000TEU	(*)		
Total	19	10	4

*Three 14,000TEU type containerships delivered in 2018 are not covered by the above because they are chartered by Ocean Network Express. 5

C-1 “Non-Operating Income and Expenses” “Extraordinary Profits and Losses”

Non-Operating Income and Expense

(billion yen)

	1H	3Q	1-3Q
Financial gain / Loss	- 2.6	- 1.2	- 3.8
Equity in Earnings of Affiliated Companies	- 10.7	- 5.6	- 16.3
Exchange Gain/Loss	3.7	- 2.4	1.2
Others	0.7	0.1	0.7
Consolidated total	- 9.0	- 9.1	- 18.2

Extraordinary Profits and Losses

	1H	3Q	1-3Q
Gain on Sales of Fixed Assets	2.3	1.2	3.5
Gain on Sales of Investments in Securities	-	1.6	1.6
Impairment Loss	- 0.3	- 0.0	- 0.3
Others	0.2	0.3	0.5
Consolidated total	2.3	3.1	5.3

C-2 Performance per Business Segment

Operating Revenue	(million yen)				
	FY2013	FY2014	FY2015	FY2016	FY2017
Containership	590,517	684,781	622,962	524,082	603,787
Bulk Shipping	575,429	603,724	570,151	458,984	523,940
Offshore Energy					
E&P Support & Heavy Lifter	32,817	35,319	24,656	19,420	7,472
Others	79,508	86,414	87,225	79,970	82,071
Total	1,278,272	1,410,239	1,304,996	1,082,457	1,217,270
Adjustment	△ 54,146	△ 57,818	△ 61,063	△ 52,266	△ 55,245
Consolidated	1,224,126	1,352,421	1,243,932	1,030,191	1,162,025

Ordinary Income	(million yen)				
	FY2013	FY2014	FY2015	FY2016	FY2017
Containership	△ 142	20,623	△ 10,049	△ 31,488	3,366
Bulk Shipping	41,261	36,501	24,656	△ 9,476	3,202
Offshore Energy					
E&P Support & Heavy Lifter	△ 4,503	△ 5,670	△ 6,553	△ 5,119	△ 965
Others	2,635	3,024	1,826	2,518	3,341
Total	39,252	54,477	9,879	△ 43,566	8,945
Adjustment	△ 6,797	△ 5,497	△ 6,541	△ 8,822	△ 6,982
Consolidated	32,455	48,981	3,338	△ 52,388	1,962

※New Segment Basis

Operating Revenue	(million yen)
	FY2017
Dry Bulk	249,043
Energy Resource Transport	75,415
Product Logistics	806,689
Others	87,018
Total	1,218,166
Adjustment	△ 56,141
Consolidated	1,162,025

Ordinary Income

Ordinary Income	(million yen)
	FY2017
Dry Bulk	△ 132
Energy Resource Transport	440
Product Logistics	5,777
Others	3,017
Total	9,102
Adjustment	△ 7,140
Consolidated	1,962

※From FY2018, We renewed our Business Segment for disclosure as below due to the Integration of Container Shipping Businesses as "Ocean Network Express".

(Old) 「Containerships」 「Bulk Shipping」 「Offshore Energy E&P Support & Heavy Lifter」 and 「Others」

→(New) 「Dry Bulk」 「Energy Resource Transport」 「Product Logistics」 and 「Others」

"K"LINE Group seek development of customer-oriented new business model and rebuild our business portfolio.