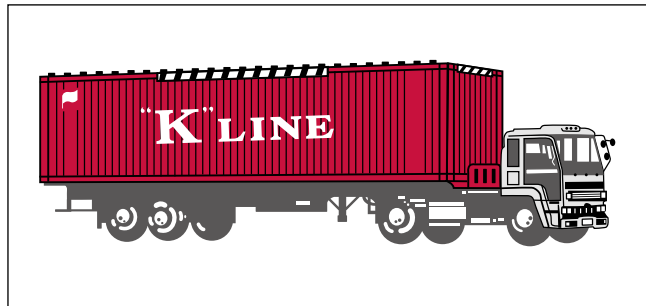
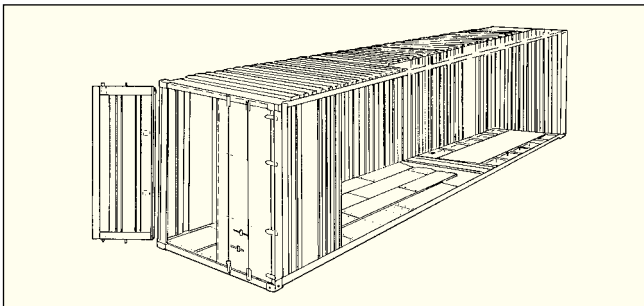


40' HC Containers



Height	Material	Tare Weight (kg/lbs)	Max* Cargo Cap (kg/lbs)	Door Opening		Interior Dimensions			Interior Cube (m³/cft)
				Width (mm/ft)	Height (mm/ft)	Length (mm/ft)	Width (mm/ft)	Height (mm/ft)	
9' - 6"	Steel	3,860 8,510	28,640 63,140	2,340 7' 8"	2,585 8' 6"	12,032 39' 6"	2,352 7' 9"	2,698 8' 10"	76.3 2,693

Remarks * : Subject to road and rail weight limitations.
: Above are typical figures for this type of containers.